



Add : No. 216, Kunlun Str, ETD Area, Jilin City, Jilin 132115 China  
 Tel : +86-311-88128044 432-63503880  
 E-mail: [tzcylm@vip.163.com](mailto:tzcylm@vip.163.com)  
 Web : <http://www.tzcylm.com> <http://www.jlhxjt.com>





China has the richest bamboo resources. Area over 7 million hectares.

Every hectare of bamboo forests can store 1000 tons of water, absorb 20-40 tons of CO<sub>2</sub> and release 15-20 tons of oxygen per year.

Bamboo forest is called "Kidney of the Earth" .



## Bamboo Friendly

Bamboo likes mountains and rivers. It naturally propagates and reaches its full growth in 3 years.

Bamboo brings us beautiful environment and happy lives.

People used to plant bamboo around houses for wealth and health.

Many poems and stories of bamboo have been handed down in China.



Bamboo is widely used in our life.

Bamboo shoot is delicious and nutritive.

Bamboo fungus is famous material for soup.

Bamboo juice is a type of bactericidal and antiphlogistic Chinese medicine.

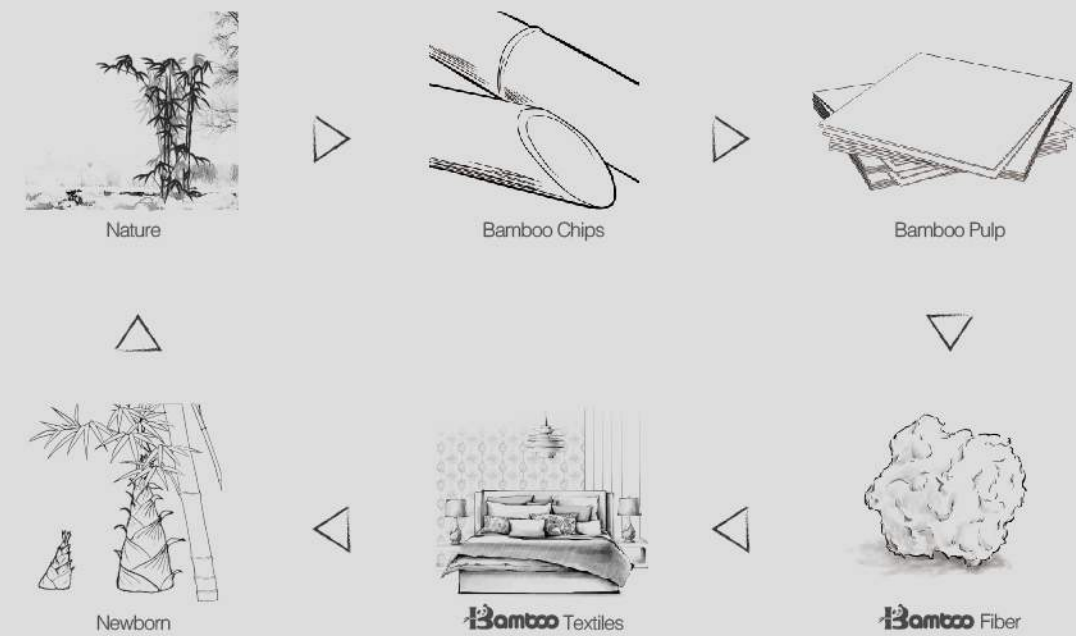
Bamboo stem is used to produce bamboo fiber due to its high cellulose content.

Producing fiber by bamboo doesn't destroy forest, occupy farmland and consume petroleum.



# Bamboo Fiber

## Bamboo Ecological System



Best bamboo with high cellulose content as raw materials

Advanced patent technology, equipments and environmental control methods

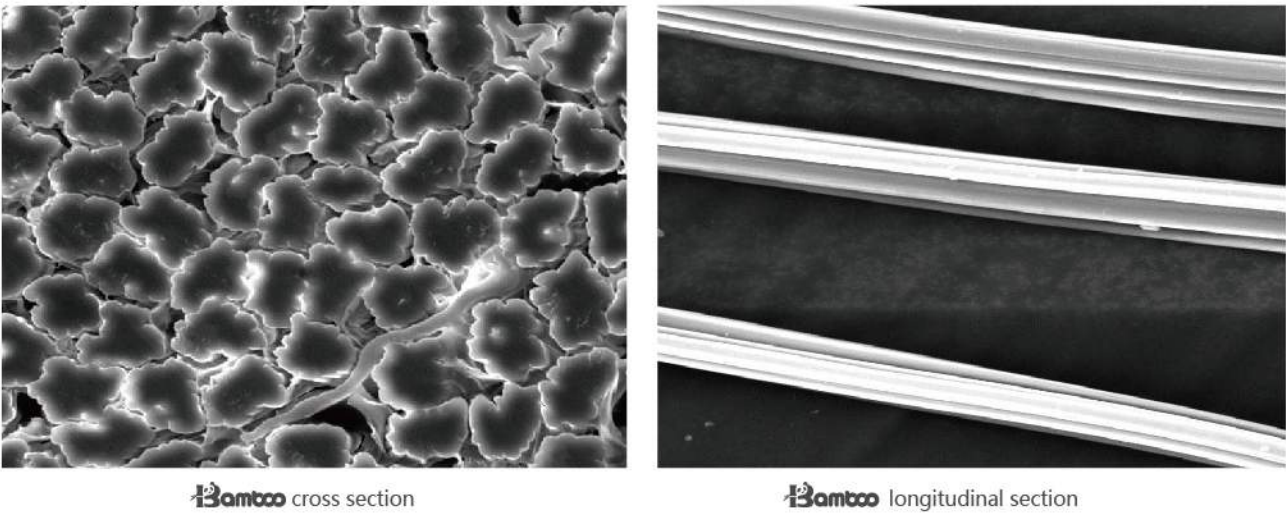
Soft, skin friendly, moisture-absorbing, air permeable and natural bacteriostasis

Completely degradable

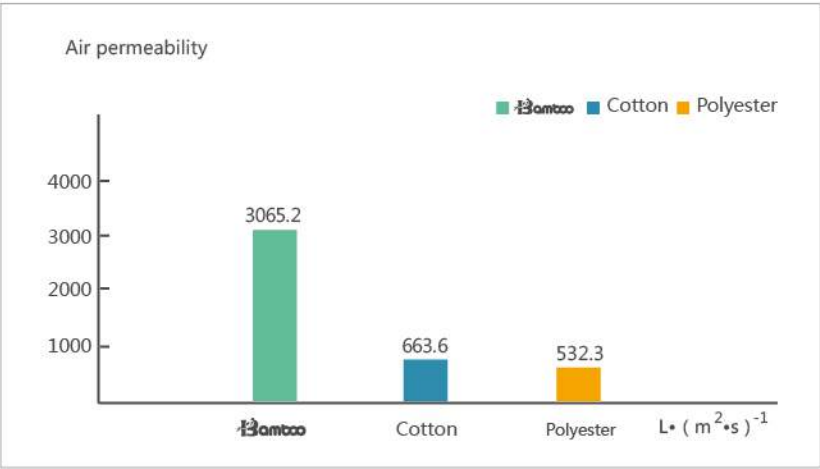
Used textiles dispose by recycling, degradation and power generation

No harm to the environment

Unique fiber structure

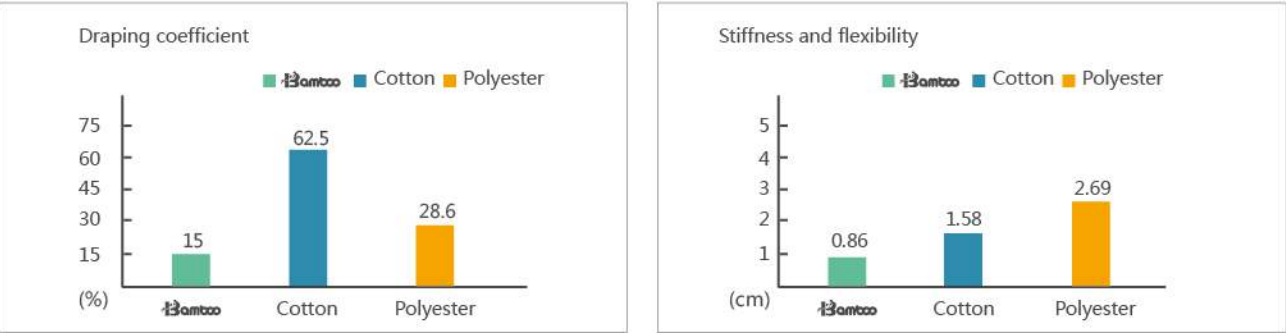


Air permeability



Higher value means better air permeability

Softness



Lower value means better drapability

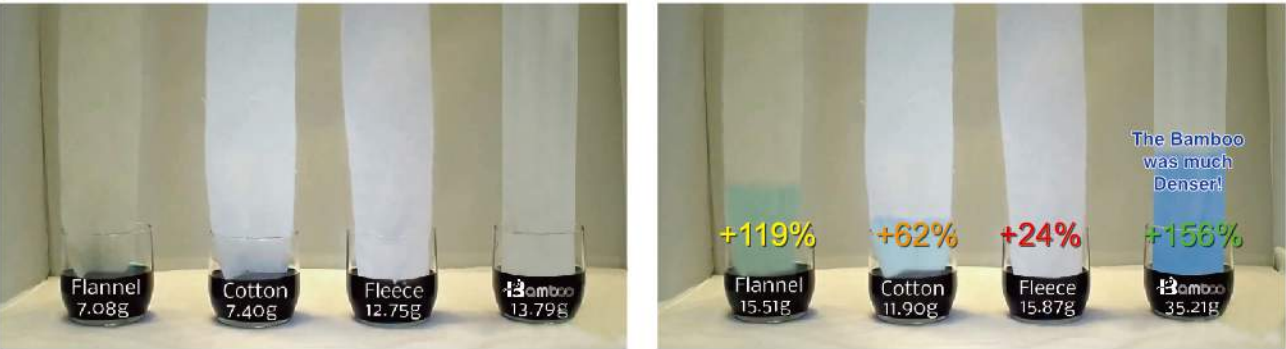
Lower value means softer

Bacteriostasis

Item	Testing standard	Requirement(%)	Results(%)	Judgement
Escherichia coli (8099)	GB/T 20944.3-2008	≥70	93	✓
Staphylococcus aureus (ATCC 6538)	GB/T 20944.3-2008	≥70	93	✓
Candida albicans (ATCC 10231)	GB/T 20944.3-2008	≥60	96	✓

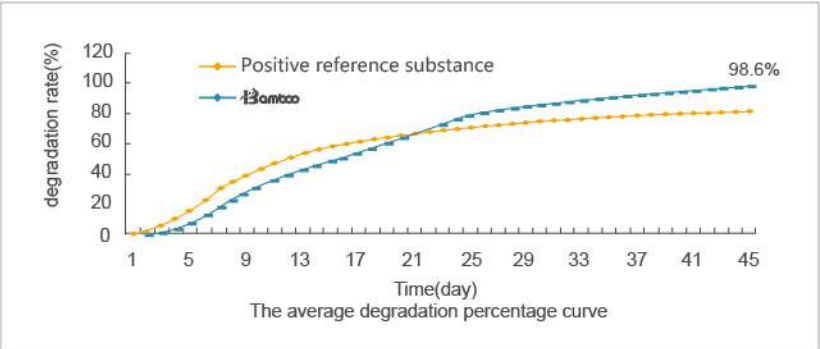
Bamboo has outstanding bacteriostasis

Moisture absorption



Water absorption test

Natural degradation



Degradation rate of Bamboo is 98.6% at the 45th day



# Bamboo Fashion



## Casual Wear

Freedom

Relaxation

Heartfelt comfort

Be yourself without restraint







### Women's Wear

Brilliant lustre

Silky and cool

Outstanding elegance

Showing individuality freely

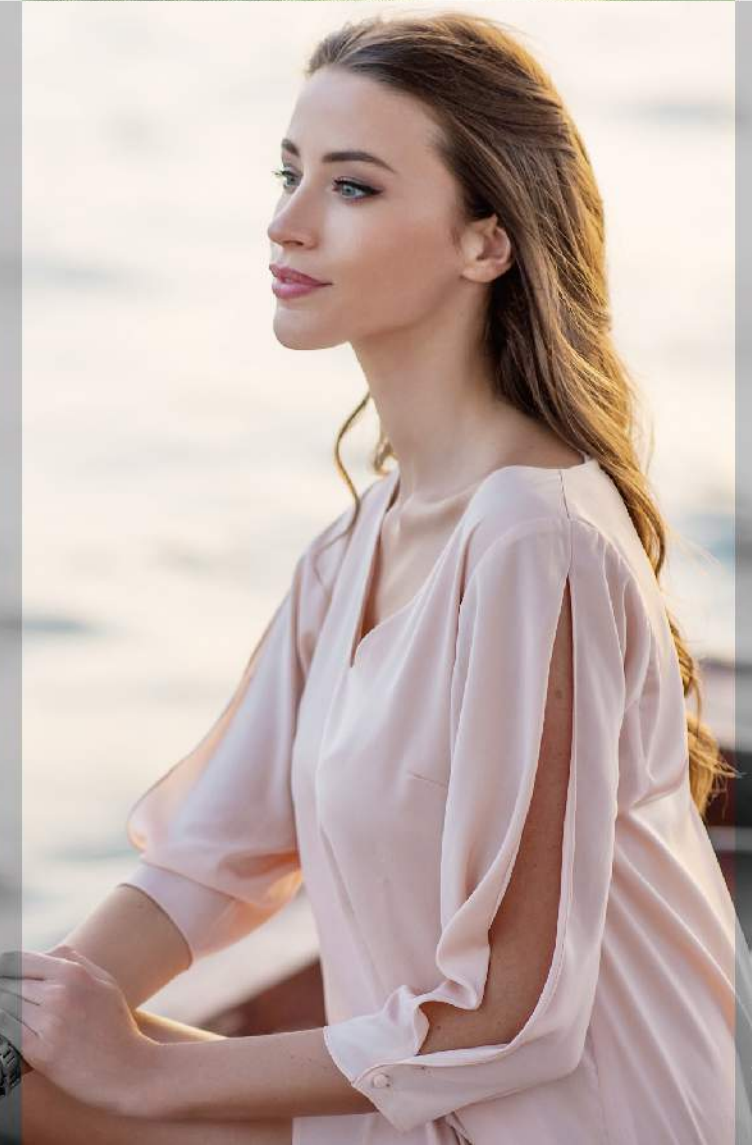
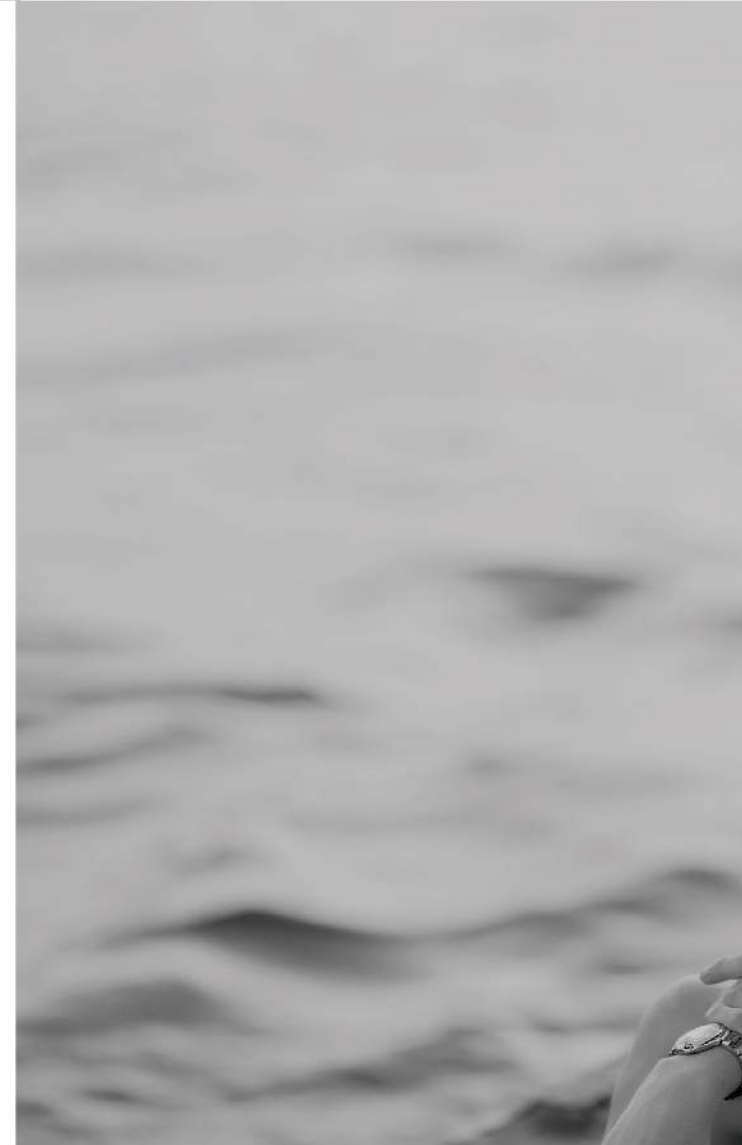


### Men's Wear

Comfortable and permeable

Sagacious and confident

Carrying gentlemanly manner



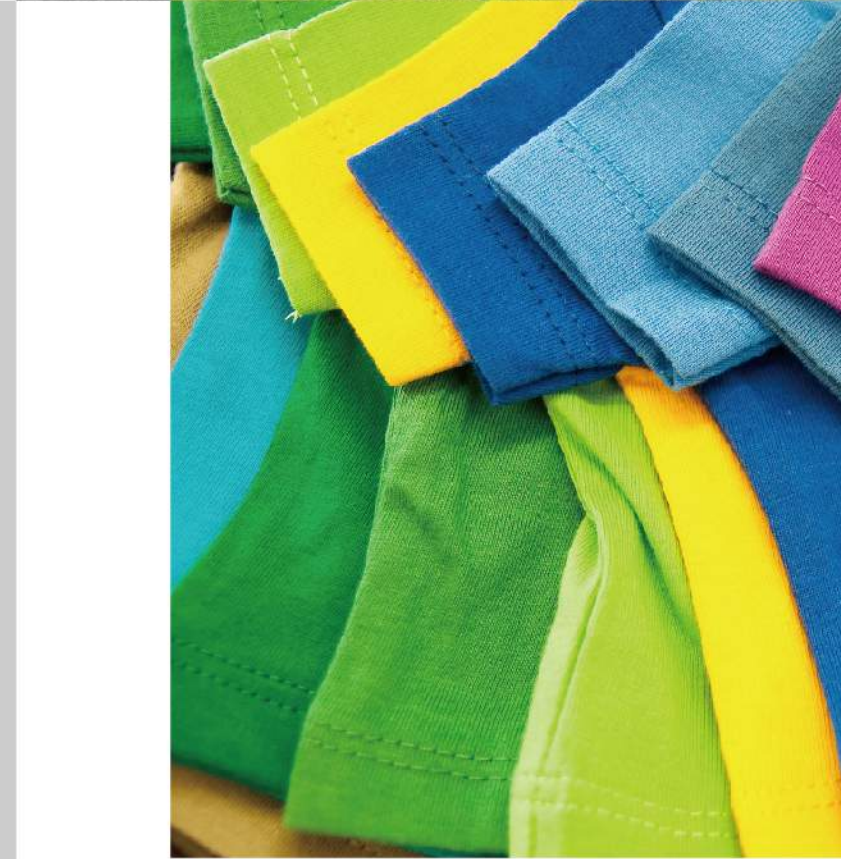


## Non-woven Textile

Better moisture absorption

Softer feeling

Bamboo brings you convenience  
and health everywhere



## Kid's Wear

Continuous discovery and pursuit

Satisfying inner curiosity and desire

Releasing active nature freely

Growing up on safer and more meticulous care





### Home Wear

Free from noise and busyness

Enjoy relaxation and care

Delicate feeling of body

Filling your family with happiness and warm



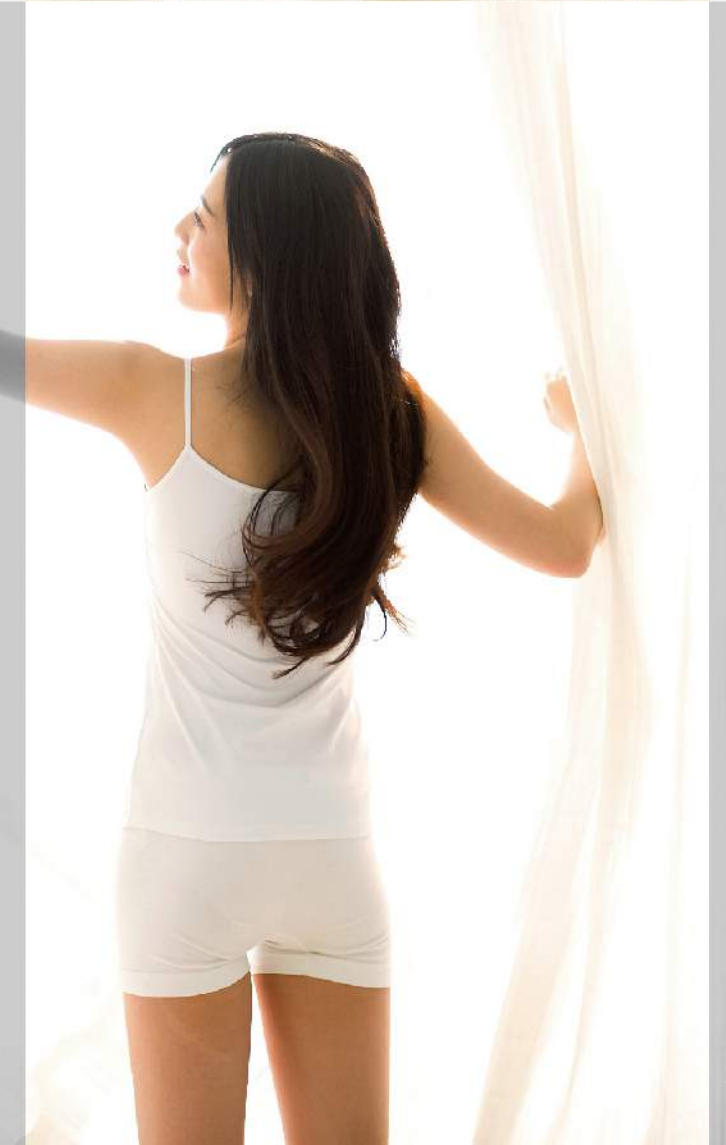
### Home Textile

Healthy and gentle care

Slight breathing of skin relaxing yourself

Relieving your fatigue

Bamboo brings you deep sleep and more energy





# Bamboo Family



**Bamboo**  
Happiness comes from Bamboo

**Bamboo Dal**  
New type of high strength fiber

**Bamboo Lint**  
Breathable thermal fabric

**Bamboo Awell**  
Excellent antibacterial fiber

**Bamboo Turalear**  
Dope dyed fiber

**Bamboo Primeval**  
Unbleached fiber

**Bamboo Silk**  
Bamboo filament yarn

**Bamboo FR**  
Flame-retardant fiber

**BAMBOOCEL**  
Origin of Bamboo fiber

Happiness comes from Bamboo

From Bamboo, Softer than Cotton

Softness and skin friendly  
Excellent moisture absorption  
Natural bacteriostasis  
Rapid degradation





From Bamboo, Softer than Cotton



Born in 1998  
Representative of Chinese original fibers  
Popular for comfort, health, ecology and environment friendliness  
Regarded as "Queen of Fiber"  
Exclusive brand for bamboo fiber of JLFIBER Group



Health and Warmth Expert



Soft and skin friendly  
Warm and anti-static  
Light and comfortable

Application areas:  
Underwear, sweater, scarf, hat,  
bedding, home textiles, etc.



Caring Every Moment, Comfort Everywhere



A new type of bamboo fiber  
Higher dry and wet strength  
Adopting modal technology  
Improving spinning efficiency and fabric feeling

Application areas:  
Bedding, knitted underwear, shirt, jeans wear,  
sports and casual wear, etc.



BIO Antibacterial, Natural Care



More extensive and durable antibacterial properties  
Different from metal ion antibacterial fibers  
No damage to environment and human body

Application areas:  
Underwear, baby's wear, wet wipes, hygiene products, etc.



## Beauty of Ecology



Adopting dope-dyed technology  
No dyeing, less emissions, environment friendly  
Natural and lasting color  
Safer and healthier to human body

Application areas:  
Color spun yarn, knitting, kid's wear,  
non-woven fabric, etc.

## Cool and Touching Your Heart



Healthy plant silk  
Selecting top quality bamboo  
Splendid lustre  
Touching exquisite and smooth

Application areas:  
Fashionable dress, scarf, T-shirt and accessory, etc.

## Nature of Bamboo



Keeping more effective element of bamboo  
Reducing the emissions in the production process  
Better care for human body

Application areas:  
Facial mask, paper towel, baby care, knitted underwear, etc.

## Safe and Comfortable



Durable flame retardant properties LOI:  $\geq 28\%$   
Soft, moisture-absorbing, anti-static and air permeable  
Natural degradation and safer to human body

Applications areas:  
Military uniform, firefighter uniform, kid's wear, special  
clothing, home textiles and industrial textiles, etc.





Jilin Chemical Fiber Group was put into production in 1964. It is first class supplier of fiber in the world, founder of Bamboo fiber and Tanboocel Union, first class production base of Bio-viscose rayon yarn, competitive production base of acrylic fiber and well-known production base of carbon fiber precursor.

## ● Patents & Award Certificates



Patent of Invention of Bamboo Pulp



Patent of Invention of Bamboo Viscose Fiber



Class II of National Science and Technology Progress Prize



Gold Medal for China Patent New Technology and Products Expo



Class I of National Enterprise Management Modernized Innovation Achievement Award

Caring Health, saving resource, green production and protecting environment, Jilin Chemical Fiber Group engages in carrying out social responsibility, supplying comfortable, healthy, ecological and environment friendly textile raw materials to the customers and contributing to sustainability of the Society.

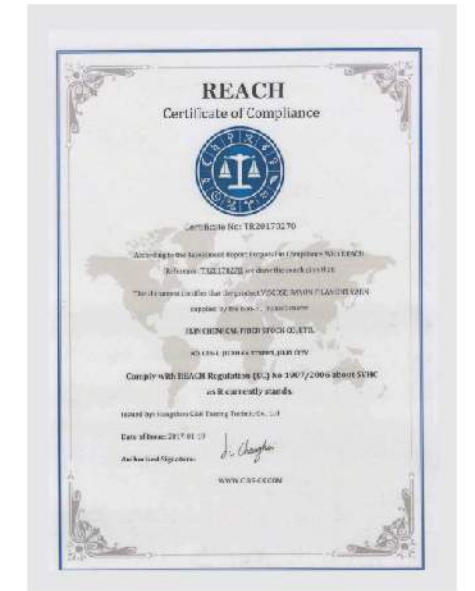
## ● Products Certificates



Bamboo Organic Certificate



Bamboo Pure Certificate



Bamboo Reach Certificate



Bamboo Fiber OEKO Certificate



Bamboo Bacteriostasis Test



Bamboo Fiber FSC Certificate





**CTBU**  
天竹联盟

One of the Most Influential Textile Industry Cooperation Platform

Established in 2005

A cooperation platform of design,  
development, marketing, detection and certification

203 members

Over 20 cooperative colleges and universities

5 detection centers

14 overseas branches

